

# WallMax® Group WR & WRS Series

## WallMax® Round Frames

WallMax® Round frames are designed specifically as pipe transit solutions.

The two-part structure is pre-assembled with a special, single-opening round module that accommodates and seals the passage of one pipe only, each model with a different range of diameter openings.

WR frames can be completed with sleeves to secure pipe passages, where bolts on the frontal flange allow to seal the path of the pipe.

Sleeves are sold as accessories and are available for each size of the WR.

The different sizes of WR allow for securing passages of the widest possible range of cable and pipe diameters. Each round rubber module has been designed to fit vast dimensions of pipes, through the easy-to-use peel-off inner layers.

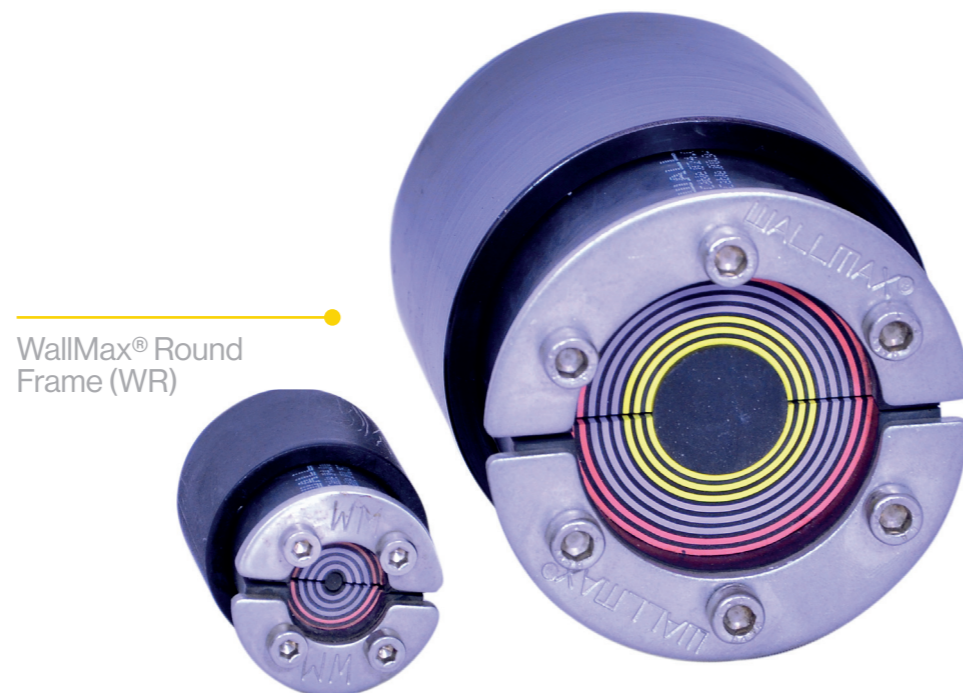
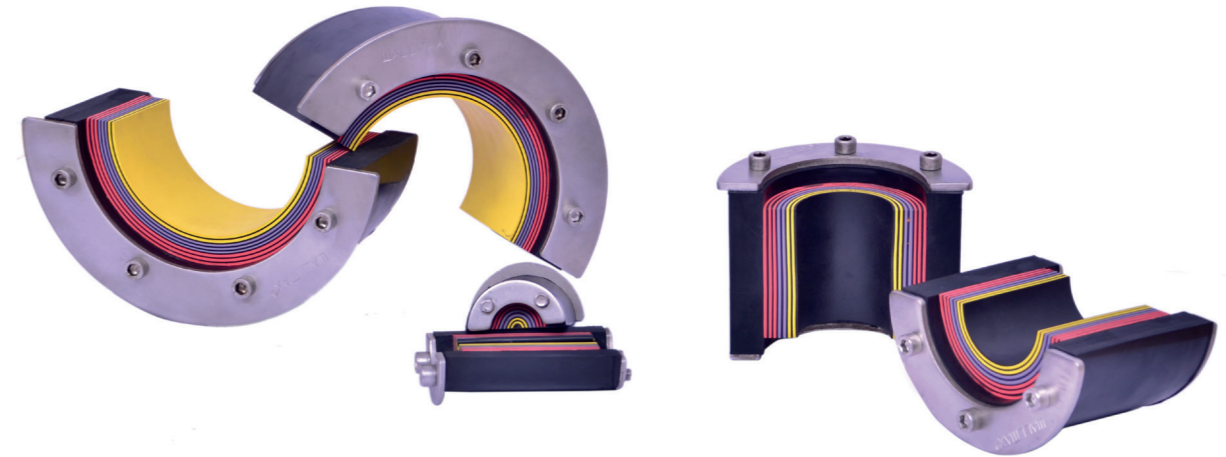
## Key benefits:

- » Designed for single cable or pipe transit.
- » Pre-assembled two-part frame with single-opening round module for precise sealing.
- » Each model supports specific range of pipe diameters.
- » Compatible with sleeves (sold separately) to further secure pipe passages via bolts on the front flange.
- » Accommodates cables and pipes from 3.6 mm to 170.0 mm diameter.
- » Peel-off inner layers allow quick, accurate adjustment to fit each pipe size.

## Materials:

SS AISI 316 L

Other materials available upon request



WallMax® Round Frame (WR)

## To be used in combination with

Code	Article	For cables & pipes		Wall opening		Weight	
		øA-øB (mm)	øA-øB (in)	mm	in	kg	lb
7111110023	WR 23 AISI 316	0+ 3.6-11.0	0+ 0.142-0.450	24-25	0.945-0.984	0.05	0.110
7111110025	WR 25 AISI 316	0+ 3.6-12.0	0+ 0.142-0.472	26-27	1.023-1.062	0.06	0.137
7111110031	WR 31 AISI 316	0+ 4.0-17.0	0+ 0.157-0.669	32-33	1.259-1.299	0.08	0.174
7111110043	WR 43 AISI 316	0+ 4.0-23.0	0+ 0.157-0.906	43-44	1.693-1.732	0.26	0.575
7111110050	WR 50 AISI 316	0+ 8.0-30.0	0+ 0.315-1.181	50-51	1.967-2.008	0.28	0.608
7111110068	WR 68 AISI 316	0+ 24.0-48.0	0+ 0.945-1.890	68-69	2.677-2.716	0.47	1.030
7111110075	WR 75 AISI 316	0+ 24.0-54.0	0+ 0.945-2.126	75-76	2.953-2.992	0.49	1.071
7111110078	WR 78 AISI 316	0+ 24.0-54.0	0+ 0.945-2.126	79-80	3.110-3.149	0.62	1.376
7111110100	WR 100 AISI 316	0+ 48.0-70.0	0+ 1.890-2.756	100-101	3.937-3.976	0.98	2.167
7111110125	WR 125 AISI 316	0+ 68.0-98.0	0+ 2.677-3.858	125-126	4.921-4.961	1.34	2.963
7111110150	WR 150 AISI 316	0+ 93.0-119.0	0+ 3.661-4.685	150-151	5.906-5.945	1.51	3.325
7111110175	WR 175 AISI 316	0+ 119.0-145.0	0+ 4.685-5.708	176-177	6.929-6.969	2.52	5.56
7112110100	WR 100 wop AISI 316	48.0-70.0	1.890-2.756	100-101	3.937-3.976	0.86	1.885
7112110125	WR 125 wop AISI 316	68.0-98.0	2.677-3.858	125-126	4.921-4.961	1.10	2.427
7112110150	WR 150 wop AISI 316	93.0-119.0	3.661-4.685	150-151	5.906-5.945	1.26	2.787
7112110175	WR 175 wop AISI 316	119.0-145.0	4.685-5.708	176-177	6.929-6.969	1.73	3.503
7112110200	WR 200 wop AISI 316	138.0-170.0	5.430-6.690	201-202	7.913-7.952	2.01	4.427

Note: weights are approx.