



connect ▶ seal ▶ protect ▶

# **IMPORTANT POINTS BEFORE YOU BEGIN**

## **Filoseal+ installation**

1. The duct and cables/pipes must be both clean and dry.
2. Separation of the cables pipes must be a minimum of 5mm both from each other and from the duct edges.
3. Gloves are provided in the kit for your use.
4. Filoseal+ kits may installed in temperatures as low as -10 degrees C.

## **Installation Instructions (ducts in a wall)**

1. Using the provided cleaning cloth, clean the first 20-25mm of the duct inner and the cables.
2. Using the provided abrasive, sand the duct inner and cables for the first 20-25mm to provide a key for the sealant to stick to.
3. Using the foam circles, split it open by the already cut split, remove the adhesive protection paper, wrap around the cable(s) and push down the duct so that it is inside the duct end by 20mm. Separate the cables.
4. Prepare the MD+ tube by cutting the cartridge and the nozzle. Insert the cartridge into your gun of choice.
5. Apply the MD+ onto the foam circle ensuring you get into every gap and around every cable or pipe. Fill up the end of the duct until at least flush with the duct end. Ensure the nozzle of the MD+ tube stays in the mastic as you apply it. This ensures no bubbles are introduced into the mastic.
6. In order to finish the seal, use the provided finishing cloth by first immersing it in water. The cloth is made of a special material that will not stick to the MD+ sealant so long as the cloth remains damp. Pat the MD+ sealant into the duct ensuring you cover every part of the seal. This patting of the sealant encourages it to adhere to the foam circle.
7. It is imperative that once you have installed the Filoseal+ the cables or pipes are not disturbed in any way until the seal is cured.
8. Curing takes 8-10 days. Backfilling a site should be avoided until at least 10 days after installation. When backfilling, ensure adequate packing is below the cables before adding material on top of the cables.

## **Installation Instructions (ducts in a floor - vertical installation)**

All of the points 1-7 above apply but at point 3, be careful not to lose the foam circle down the duct as it may not be easily retrieved.

At point 5, if the duct is outdoors, ensure a raised dome finish is made in the sealant in order to promote the run-off of rainwater.

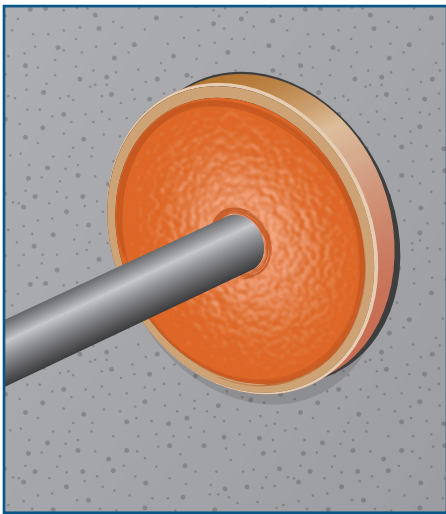
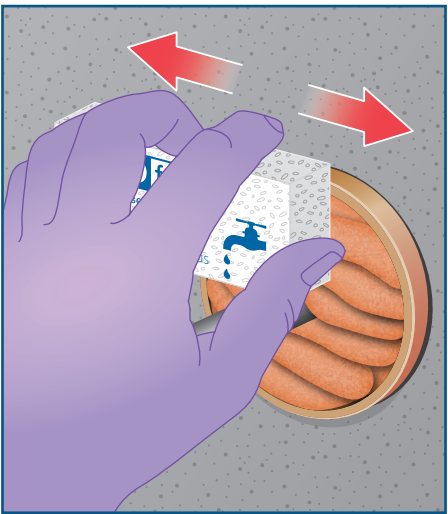
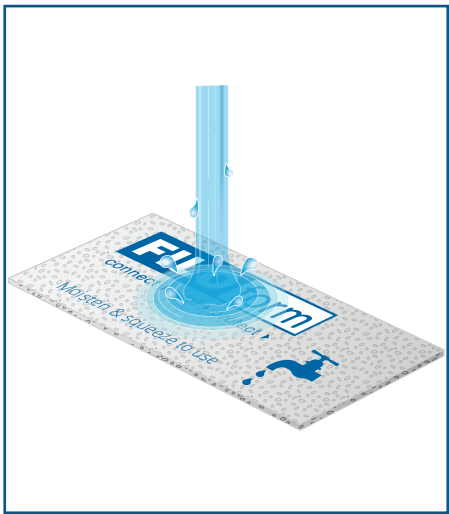
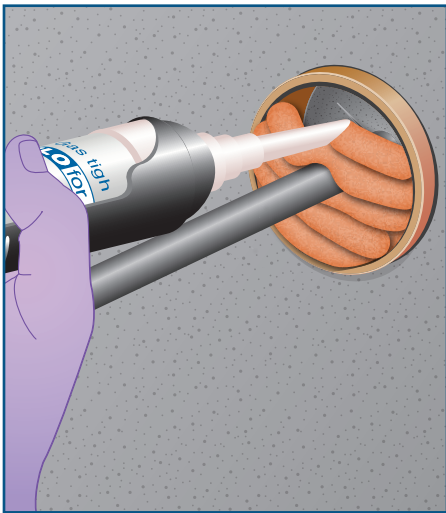
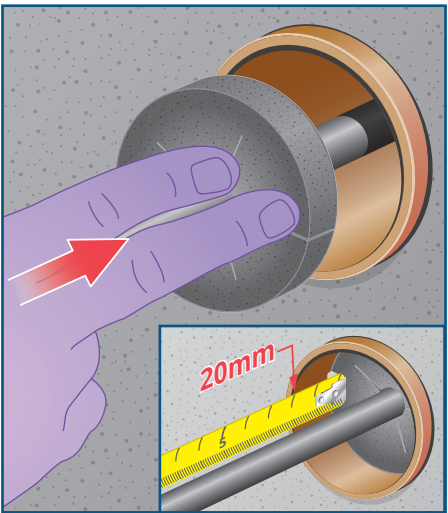
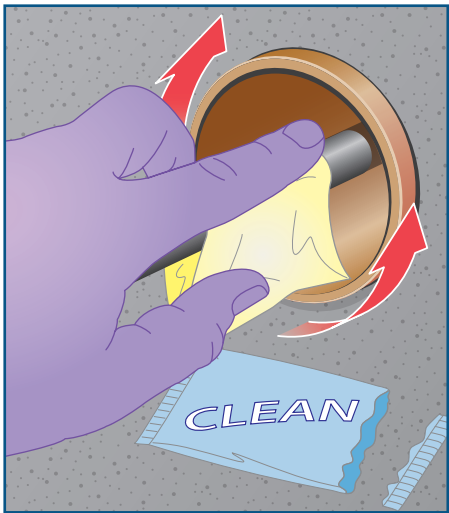
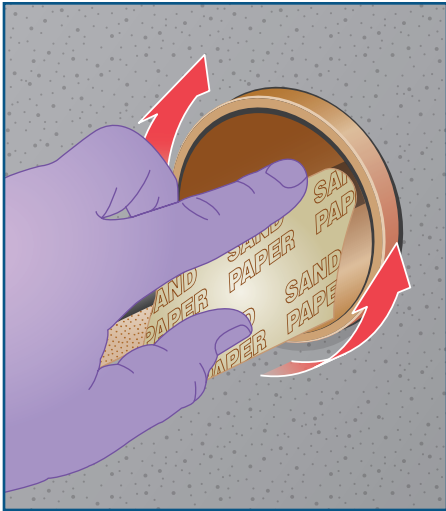
**Filoform UK Ltd have supplied thousands of seals to many different industries. We are confident that the seals will work every time as long as the instructions and tips are followed precisely.**

Filoform UK Ltd.

Tel: 01189 886 873 - Fax: 01189 886 576 - Email: [info@filoform.co.uk](mailto:info@filoform.co.uk) - Web: [www.filoform.co.uk](http://www.filoform.co.uk)

# FILOform

connect ▶ seal ▶ protect ▶



Filoform UK Ltd.

Tel: 01189 886 873 - Fax: 01189 886 576 - Email: info@filoform.co.uk - Web: www.filoform.co.uk