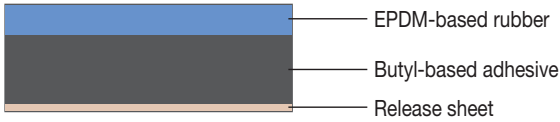


Hyperflash No. 695 is composed of an easy-to-shape, rubber base material and butyl-based adhesive and release sheet. Hyperflash is a waterproofing tape that is attached by uniform stretching and pressure application along both the length and width. Hyperflash can be used around pipes, external corners and other irregularly shaped areas (trim).

Features

- Excellent vertical and horizontal stretching capabilities and outstanding in terms of ease of application.
- Has plasticity-type, shape-forming capabilities and can be applied to various areas and shapes.
- Outstanding durability, adhesiveness to rough surfaces, watertightness and airtightness, and foundation adhesion.
- Single tape for multiple construction uses.

Composition of tape

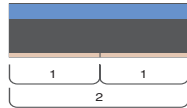


Standard specifications and main recommended applications

Width (in.)	Length (ft.)	Main recommended uses
2	32.8	Wall air-passage pipes, around ventilation fans, other
3, 4		Hand-railed connecting walls, external corners, other
8		All areas of windowsills, windowsill corners, other

Please inquire separately for sizes other than standard specifications.

Our tapes are available with a back-side perforation for peeling the release sheet and with no back-side perforation. The tape with the back-side perforation is shown in the illustration at the right.



Testing of the stretching multiple for Hyperflash® by area

Purpose: Verification of tape stretching ratio by area after application

Testing method: White markings were imprinted beforehand at 10mm angles on the tape surface. The spacing between the markings was measured after attaching the tape.

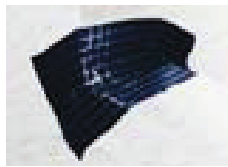


Attaching around pipes

PVC pipe designation: 100mm diameter
Tape width: 45mm (15mm finish)

<Test results>

Maximum stretch multiple: approximately 1.5 times



Attaching to hand rail

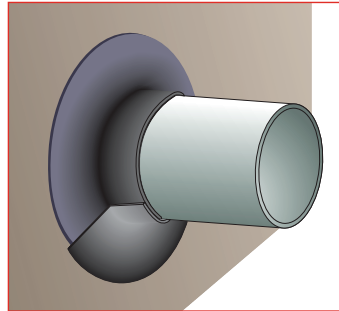
Hand-rail thickness: approximately 124mm

Tape specifications: width: 100mm; length: 300mm

<Test results>

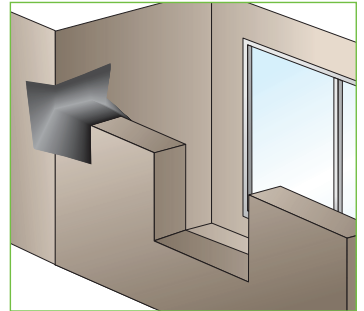
Maximum stretch multiple: approximately 1.5 times

Attaching around pipes



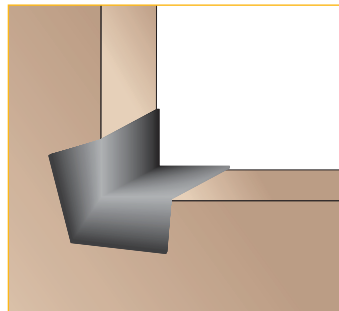
Pages 3-4

Attaching to balcony handrail



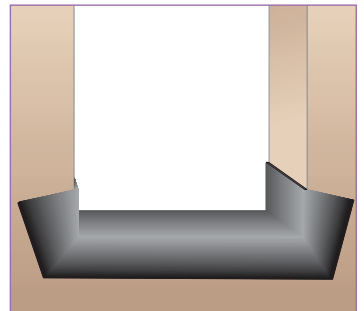
Pages 5-6

Attaching to windowsill corners



Pages 7-8

Attaching to windowsills



Pages 9-10

Caution during application

1. Hyperflash No. 695 is designed to easily change shape to ensure an easy fit with the foundation. When altering the shape of the tape, the tape's stretching should be limited to two times the original size.
2. Apply the tape at a temperature of 32°F (0°C) or above.
3. To prevent the moisture-permeable, weather resistive barrier from moving during installation, the sheet should be affixed to a rigid foundation.
4. Confirm that the area to which the tape is being applied has a rigid foundation.
5. Apply sufficient pressure over the entire tape for finishing application.

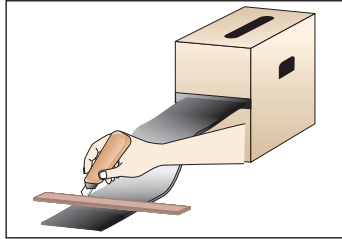
Key Points for Application

Application around pipes

1. Cut the tape to the necessary length

Cut the tape to the necessary length using a cutting knife or scissors and adding an extra approximately 50mm of tape joint to the length of the pipe diameter.

*Recommend 2-inch-width tape for taping around pipe

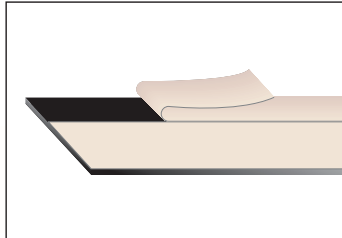


Caution

When using a cutting knife, cutting should be done using the tape's back side (the side opposite the adhesive side) facing upward. Please use caution because the release sheet is slippery. Tape should be stored in a vertical position.

2. Removal of release sheet

Remove one of the release sheets on the adhesive portion of the tape.

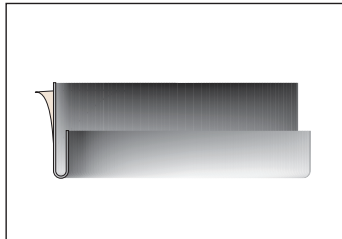


Caution

After removing the release sheet, please use caution to prevent impurities and other foreign matter from adhering to the adhesive portion of the tape.

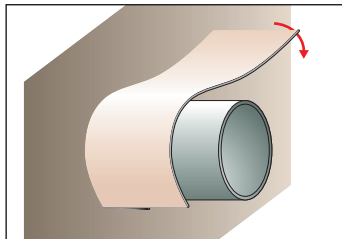
3. Fold the tape along its center crease in the direction of the width

Position the adhesive side facing the outside (away from the user) and fold the peeled adhesive side beforehand underneath the unpeeled adhesive side toward the center of the tape in the direction of the width.



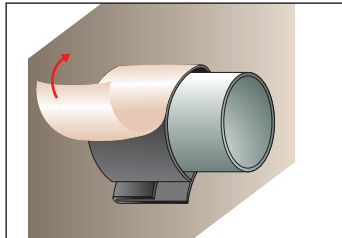
4.1 Attaching the tape to the pipe

First attach the centerfolded peeled adhesive portion of the tape to the pipe. When beginning to attach the tape, make sure the tape joint is below the point where the water flows out.



4.2 Attaching the tape to the pipe

Attach the tape while wrapping the tape around the pipe surface and leaving the tape joint in place. Next, remove the remaining release sheet on the adhesive portion that is now on the opposite side.



• Tip

Be sure to attach the tape so that it fits snugly to where the pipe attaches.

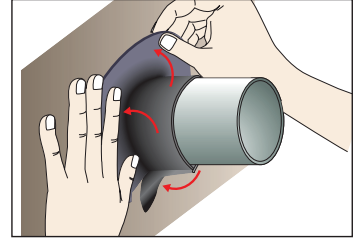
5.1 Attaching the tape to the wall

While firmly securing the pipe to which the tape has been attached, attach the tape to the wall while pushing and spreading the tape to prevent wrinkling.

• Tip

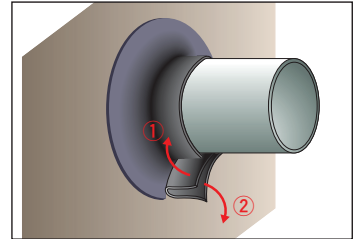
When stretching the tape, apply uniform pressure covering both the width and length.

The tape joint is attached to the pipe surface. Complete work in the order of the joints.



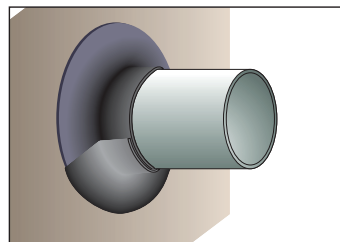
5.2 Attaching the tape to the wall

Attach tape to the wall leaving the tape joint in place.

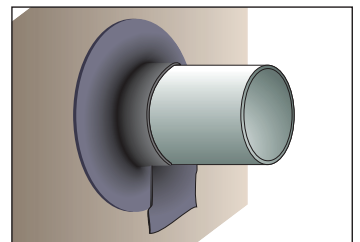


6. Attaching the tape joint

There are two methods for fitting the reciprocal tape joints: circular attachment method and the α circular attachment method. For each method, apply pressure to attach the joints and maintain water tightness.



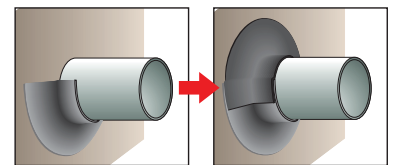
Circular attachment method



α circular attachment method

Application method for finishing off the taping around the pipe

The tape is divided into two strips and each strip is attached separately. The lower tape is attached first. Ensure that the reciprocal tape joint is facing downward.



Lower tape

Upper tape