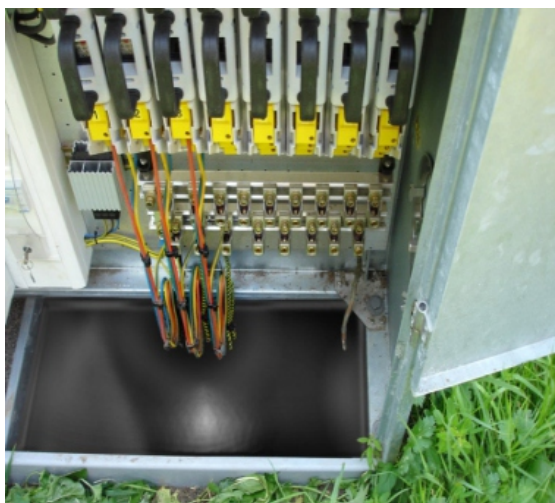


# Cabinet base sealant - Black



2 component sealant used to seal the base of street cabinets.

For use in LV distribution cabinets, public lighting cabinets, cabinets for traffic control, and outdoor transformer station installations.

Approved for use on the Highways & TFL sites

Installation Tips :

- Dry and clean the interior walls of the cabinet, including any holes or openings.
- Add kiln dried sand to the bottom of the cabinet and level evenly.
- Mix the 2 component sealant and pour evenly over the base.
- Allow to set (given potlife below)

## Features

- Available in 2 component mixing bags (940 ml)
- Prevents ingress of moisture, pests and the intrusion of weeds, roots and plants
- Improves the climate inside the street cabinets and transformer stations
- Decrease interference of the equipment
- Extends the life of the components
- Quick and easy to apply
- Good flow properties
- Self levelling characteristics
- Good adhesion
- Smooth and non tacky surface

Properties	Unit	Value
Potlife (process time) 5°C	minutes	30
Potlife (process time) 23°C	minutes	10
Potlife (process time) 35°C	minutes	7
Gel-time	minutes	23
Viscosity (mixture) 25°C	Pa.s	ca. 3
Density	g / cm <sup>3</sup>	1.4
Hardness	Shore D	52
Tensile strength	N / mm <sup>2</sup>	4
Water absorption (30d/23°C)	%	< 1.0
Weight loss 28d/120°C	%	0.8
Surface structure cured under water		no bubbles

Art.nr.	Product Name	Colour	Content	Order unit
50200022	Cabinet Base Sealant Black 940ml	black	940ml	6 pcs/carton