

# WallMax® Group WR & WRS Series

## WallMax® Flanged Sleeves for WR

Sleeves are accessories and complements to WR frames.

Useful tools to secure passages and mount frames according to customer needs, they come in different sizes and materials, to fit any model of WR.

SLVFWR are designed for installation through bolting.

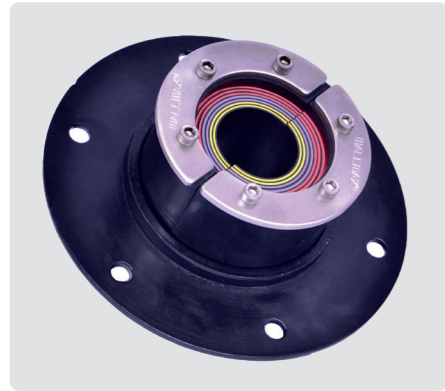
### Key benefits:

- » Sleeve accessory for WR frames – with flange
- » Available in various sizes/materials
- » Designed for bolted installation

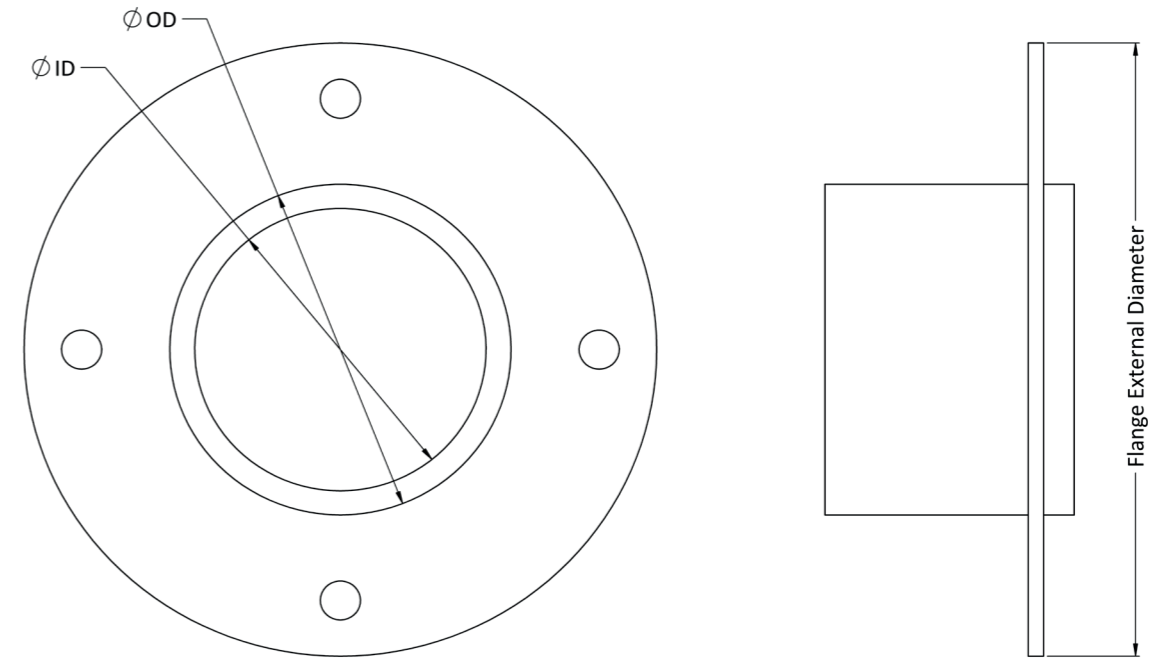
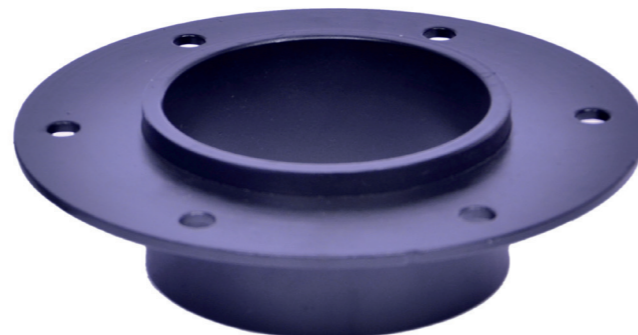
### Materials:

Primed Steel  
SS AISI 316 L  
Aluminium  
Galvanised Steel  
Other materials available upon request

**Flange can come without holes upon request**



WallMax®  
Flanged Sleeves  
for WR (SLVFWR)



Code	Article	ø D Inner mm	ø D Outer mm	External diameter flange (mm)	Weight	
					kg	lb
711150 0023	SLVFWR 23 Primed	24	32	96	0.27	0.595
711150 0025	SLVFWR 25 Primed	26	34	96	0.29	0.635
711150 0031	SLVFWR 31 Primed	32	40	102	0.33	0.719
711150 0043	SLVFWR 43 Primed	44	52	110	0.52	1.153
711150 0050	SLVFWR 50 Primed	51	63	140	0.91	2.015
711150 0068	SLVFWR 68 Primed	69.5	83	155	1.25	2.760
711150 0075	SLVFWR 75 Primed	76.5	89	165	1.31	2.892
711150 0078	SLVFWR 78 Primed	79	93	168	1.35	2.976
711150 0100	SLVFWR 100 Primed	101	114	195	1.70	3.757
711150 0125	SLVFWR 125 Primed	126	140	213	2.09	4.610
711150 0150	SLVFWR 150 Primed	151	164	236	2.30	5.079
711150 0175	SLVFWR 175 Primed	176	190	255	2.73	6.019
711150 0200	SLVFWR 200 Primed	201	214	290	3.06	6.746

Note: weights are approx.

Code	Article	ø D Inner mm	ø D Outer mm	External diameter flange (mm)	Weight	
					kg	lb
7111510023	SLVFWR 23 AISI 316	24	32	96	0.28	0.617
7111510025	SLVFWR 25 AISI 316	26	34	96	0.29	0.633
7111510031	SLVFWR 31 AISI 316	32	40	102	0.32	0.703
7111510043	SLVFWR 43 AISI 316	44	52	110	0.53	1.173
7111510050	SLVFWR 50 AISI 316	51	63	140	0.93	2.050
7111510068	SLVFWR 68 AISI 316	69.5	83	155	1.28	2.815
7111510075	SLVFWR 75 AISI 316	76.5	89	165	1.38	3.036
7111510078	SLVFWR 78 AISI 316	79	93	168	1.35	2.976
7111510100	SLVFWR 100 AISI 316	101	114	195	1.74	3.829
7111510125	SLVFWR 125 AISI 316	126	140	213	2.13	4.705
7111510150	SLVFWR 150 AISI 316	151	164	236	2.35	5.183
7111510175	SLVFWR 175 AISI 316	176	190	255	2.80	6.172
7111510200	SLVFWR 200 AISI 316	201	214	290	3.12	6.885
7111520023	SLVFWR 23 AL	24	32	96	0.09	0.198
7111520025	SLVFWR 25 AL	26	34	96	0.10	0.209
7111520031	SLVFWR 31 AL	32	40	102	0.11	0.236
7111520043	SLVFWR 43 AL	44	52	110	0.18	0.399
7111520050	SLVFWR 50 AL	51	63	140	0.31	0.697
7111520068	SLVFWR 68 AL	69.5	83	155	0.43	0.957
7111520075	SLVFWR 75 AL	76.5	89	165	0.45	1.001
7111520078	SLVFWR 78 AL	79	93	168	0.46	1.014
7111520100	SLVFWR 100 AL	101	114	195	0.59	1.301

Note: weights are approx.

Code	Article	ø D Inner mm	ø D Outer mm	External diameter flange (mm)	Weight	
					kg	lb
7111520125	SLVFWR 125 AL	126	140	213	0.72	1.596
7111520150	SLVFWR 150 AL	151	164	236	0.80	1.759
7111520200	SLVFWR 175 AL	176	190	255	0.95	2.094
7111520200	SLVFWR 200 AL	201	214	290	1.06	2.335
7111530023	SLVFWR 23 Galv	24	32	96	0.27	0.595
7111530025	SLVFWR 25 Galv	26	34	96	0.29	0.635
7111530031	SLVFWR 31 Galv	32	40	102	0.33	0.719
7111530043	SLVFWR 43 Galv	44	52	110	0.52	1.153
7111530050	SLVFWR 50 Galv	51	63	140	0.91	2.015
7111530068	SLVFWR 68 Galv	69.5	83	155	1.25	2.760
7111530075	SLVFWR 75 Galv	76.5	89	165	1.31	2.892
7111530078	SLVFWR 78 Galv	79	93	168	1.35	2.976
7111530100	SLVFWR 100 Galv	101	114	195	1.70	3.757
7111530125	SLVFWR 125 Galv	126	140	213	2.09	4.610
7111530150	SLVFWR 150 Galv	151	164	236	2.30	5.079
7111530175	SLVFWR 175 Galv	176	190	255	2.73	6.019
7111530200	SLVFWR 200 Galv	201	214	290	3.06	6.746

Note: weights are approx.