

WallMax® Group

WR & WRS Series

WallMax® Flanged Sleeves for WRS

Sleeves are accessories and complements to WRS frames.

Useful tools to secure passages and mount frames according to customer's needs, they come in different sizes and materials, to fit any model of WRS.

SLVFWRS are designed for installation through bolting.

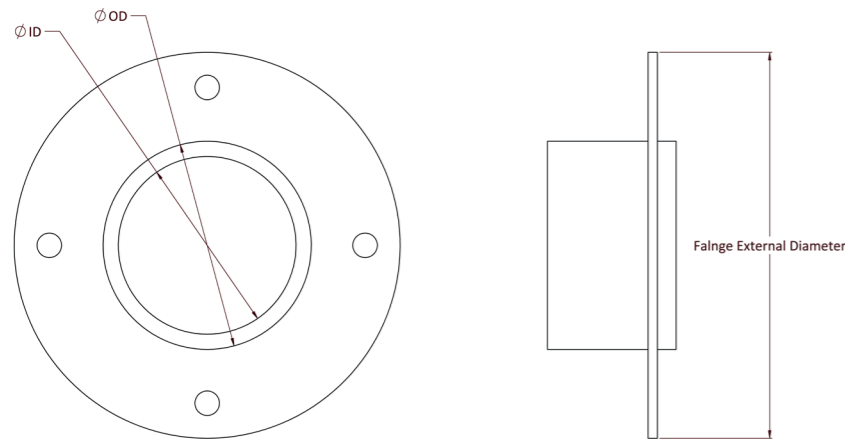
Key benefits:

- » Sleeve accessory for WRS frames – with flange
- » Available in various sizes/materials
- » Designed for bolted installation

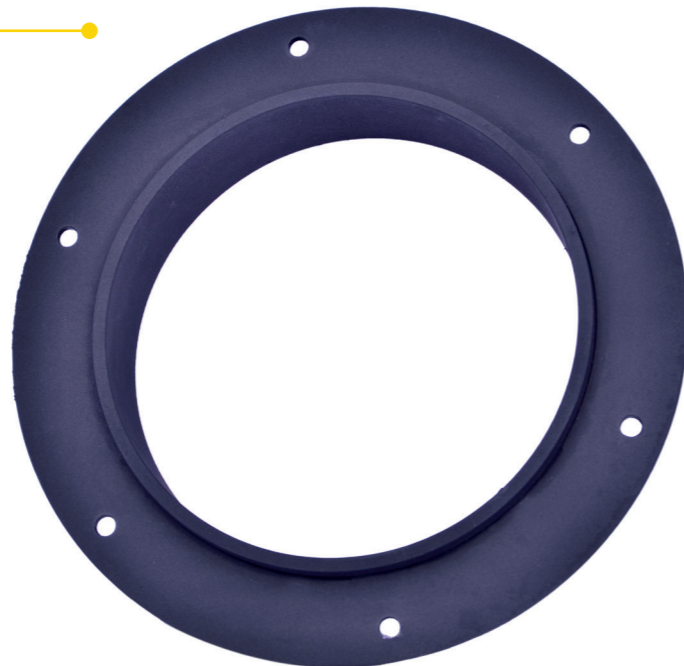
Materials:

Primed Steel
SS AISI 316 L
Aluminium
Galvanised Steel
Other materials available upon request

Flange can come without holes upon request



WallMax® Flanged Sleeves for WRS (SLVFWRS)



Code	Article	ø D Inner (mm)	ø D Outer (mm)	External diameter flange (mm)	Weight	
					kg	lb
711140 0070	SLVFWRS 70 Primed	71	83	160	0.84	1.852
711140 0075	SLVFWRS 75 Primed	76.5	89	165	1.18	2.604
711140 0100	SLVFWRS 100 Primed	101	114	195	1.53	3.380
711140 0125	SLVFWRS 125 Primed	126	140	213	1.86	4.107
711140 0127	SLVFWRS 127 Primed	128	140	213	1.88	4.151
711140 0150	SLVFWRS 150 Primed	151	164	236	2.05	4.526
711140 0200	SLVFWRS 200 Primed	201	214	290	2.73	6.019
711141 0070	SLVFWRS 70 AISI 316	71	83	160	0.87	1.911
711141 0075	SLVFWRS 75 AISI 316	76.5	89	165	1.21	2.674
711141 0100	SLVFWRS 100 AISI 316	101	114	195	1.58	3.474
711141 0125	SLVFWRS 125 AISI 316	126	140	213	1.92	4.221
711141 0127	SLVFWRS 127 AISI 316	128	140	213	1.93	4.244
711141 0150	SLVFWRS 150 AISI 316	151	164	236	2.11	4.654
711141 0200	SLVFWRS 200 AISI 316	201	214	290	2.81	6.186
711142 0070	SLVFWRS 70 AL	71	83	160	0.29	0.633
711142 0075	SLVFWRS 75 AL	76,5	89	165	0.41	0.902
711142 0100	SLVFWRS 100 AL	101	114	195	0.53	1.171
711142 0125	SLVFWRS 125 AL	126	140	213	0.65	1.422
711142 0127	SLVFWRS 127 AL	128	140	213	0.66	1.444
711142 0150	SLVFWRS 150 AL	151	164	236	0.71	1.567
711142 0200	SLVFWRS 200 AL	201	214	290	0.95	2.083
711143 0070	SLVFWRS 70 Galv	71	83	160	0.84	1.852
711143 0075	SLVFWRS 75 Galv	76.5	89	165	1.18	2.604
711143 0100	SLVFWRS 100 Galv	101	114	195	1.53	3.380
711143 0125	SLVFWRS 125 Galv	126	140	213	1.86	4.107
711143 0127	SLVFWRS 127 Galv	128	140	213	1.88	4.151
711143 0150	SLVFWRS 150 Galv	151	164	236	2.05	4.526
711143 0200	SLVFWRS 200 Galv	201	214	290	2.73	6.019

Note: weights are approx.