

# WallMax® Group

## WMF Series

### WallMax® Modular Frame

WallMax® Modular Frames are rectangular structures made of different angular and flat parts, which can be assembled together through bolts and nuts to create either single or multiple openings for modules.

WMF frames are modular solutions where the separate parts can be combined and assembled around existing installations, thus allowing special ease of mounting.

WMF are solutions designed for installation through bolting or casting in the wall.

Modular Frames are used in combination with WMR series modules and accessories, including expanders and retainer plates.

While the pieces are bolted together, the complete frame is designed for bolting and casting in the wall.

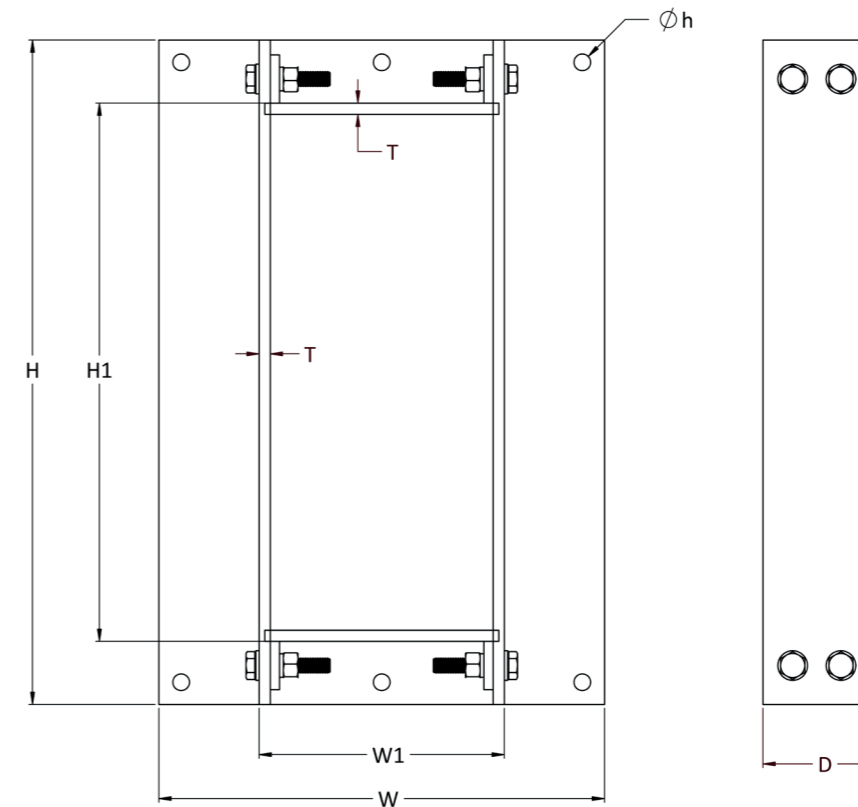
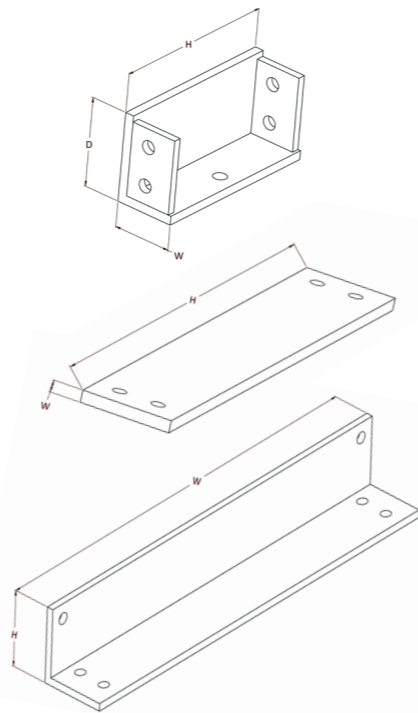
#### Key benefits:

- » Modular rectangular frames comprised of flat and angular parts
- » Can be assembled together to create either single or multiple openings for modules
- » Easily mounted around existing installations
- » Designed for bolted or wall casting installation

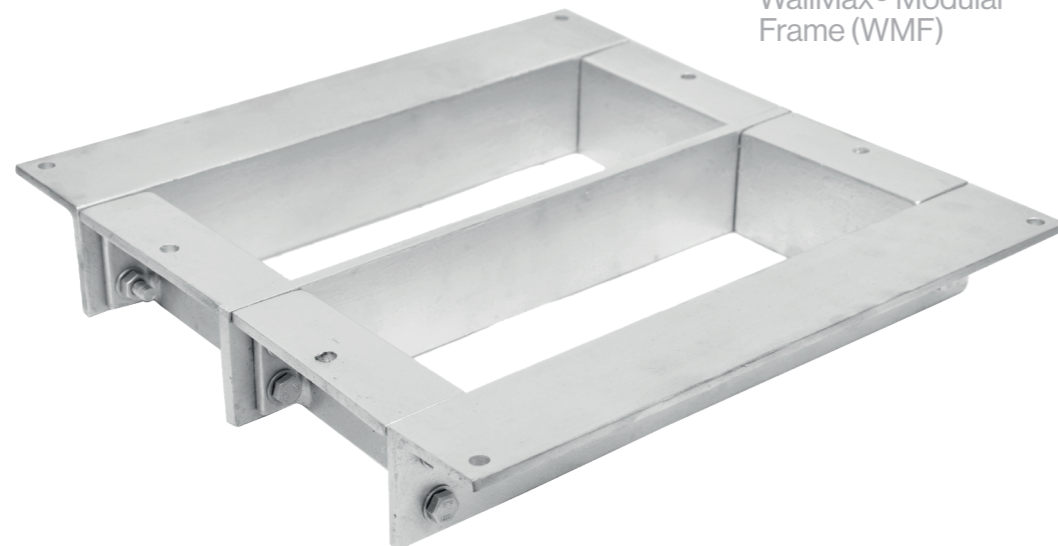
#### Materials:

Primed Steel  
SS AISI 316 L  
Galvanised Steel

Other materials available upon request



POS	(mm)	(inches)
H1	H-68	H-2.667
W1	W-54	W-2.226
D	60	2.362
T	6	0.236
Øh	6	0.236



WallMax® Modular Frame (WMF)

To be used in combination with

Code	Article	Packing space (mm)	External nominal dimensions (HxW D=60mm)		Weight	
			mm	in	kg	lb
711033 0512	WMF ANG SS 120 Galv	width = 120mm	120x40	4.724x1.575	0.53	1.168
711033 0518	WMF ANG LS 60 Galv	60x120	181x40	7.126x1.575	0.94	2.077
711033 0524	WMF ANG LS 120 Galv	120x120	240x40	9.449x1.575	1.26	2.784
711033 0529	WMF ANG LS 180 Galv	180x120	290x40	11.417x1.575	1.57	3.466
711033 0535	WMF ANG LS 240 Galv	240x120	358x40	14.094x1.575	1.94	4.279
711033 0818	WMF PLATE 60 Galv	60x120	181x8	7.126x0.315	0.65	1.435
711033 0824	WMF PLATE 120 Galv	120x120	240x8	9.449x0.315	0.88	1.929
711033 0829	WMF PLATE 180 Galv	180x120	298x8	11.732x0.315	1.10	2.425
711033 0835	WMF PLATE 240 Galv	240x120	358x8	9.449x0.315	1.32	2.919

Note: weights are approx.

Code	Article	Openings	Packing space (mm)	External nominal dimensions (HxW D=60mm)	
				mm	in
711033 0611	WMF 60 1x1 Galv	1x1	60x120	178x240	7.008x9.449
711033 0612	WMF 60 1x2 Galv	1x2	60x120	178x368	7.008x14.448
711033 0613	WMF 60 1x3 Galv	1x3	60x120	178x496	7.008x19.526
711033 0614	WMF 60 1x4 Galv	1x4	60x120	178x624	7.008x24.567
711033 0615	WMF 60 1x5 Galv	1x5	60x120	178x752	7.008x29.606
711033 0616	WMF 60 1x6 Galv	1x6	60x120	178x880	7.008x34.646
711033 0211	WMF 120 1x1 Galv	1x1	120x120	238x240	9.370x9.449
711033 0212	WMF 120 1x2 Galv	1x2	120x120	238x368	9.370x14.448
711033 0213	WMF 120 1x3 Galv	1x3	120x120	238x496	9.370x19.526
711033 0214	WMF 120 1x4 Galv	1x4	120x120	238x624	9.370x24.567
711033 0215	WMF 120 1x5 Galv	1x5	120x120	238x752	9.370x29.606
711033 0216	WMF 120 1x6 Galv	1x6	120x120	238x880	9.370x34.646
711033 1811	WMF 180 1x1 Galv	1x1	180x120	298x240	11.732x9.449
711033 1812	WMF 180 1x2 Galv	1x2	180x120	298x368	11.732x14.448
711033 1813	WMF 180 1x3 Galv	1x3	180x120	298x496	11.732x19.526
711033 1814	WMF 180 1x4 Galv	1x4	180x120	298x624	11.732x24.567
711033 1815	WMF 180 1x5 Galv	1x5	180x120	298x752	11.732x29.606
711033 1816	WMF 180 1x6 Galv	1x6	180x120	298x880	11.732x34.646
711033 2411	WMF 240 1x1 Galv	1x1	240x120	358x240	14.094x9.449
711033 2412	WMF 240 1x2 Galv	1x2	240x120	358x368	14.094x14.448
711033 2413	WMF 240 1x3 Galv	1x3	240x120	358x496	14.094x19.526
711033 2414	WMF 240 1x4 Galv	1x4	240x120	358x624	14.094x24.567
711033 2415	WMF 240 1x5 Galv	1x5	240x120	358x752	14.094x29.606
711033 2416	WMF 240 1x6 Galv	1x6	240x120	358x880	14.094x34.646

Note: weights are approx.

