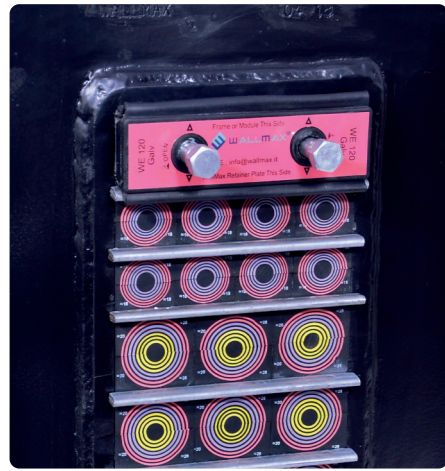


WallMax® Group WRFF Series

WallMax® Rectangular Flanged Frame

WallMax® Rectangular Flanged Frames are metal structures with a 10mm thick flange, and single or multiple openings.

Several combinations of sizes and materials are made available, and customised solutions for cable passages can be developed according to customers' needs.



WRFF are designed for installation through casting in the wall or welding.

WRFF frames are used in combination with WMR series and accessories to create personalised cable transit solutions.

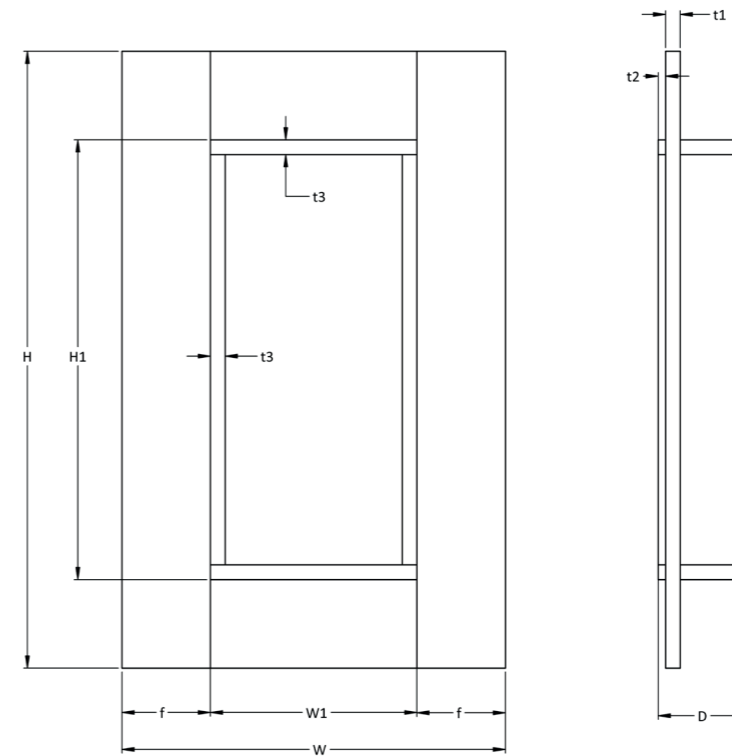
Different combinations of modules can be accommodated, according to customer needs.

Key benefits:

- » Metal frame with 10mm flange
- » Single or multi-opening options
- » Designed for wall casting or welded installation
- » Compatible with WMR modules and accessories to create personalised cable transit solutions

Materials:

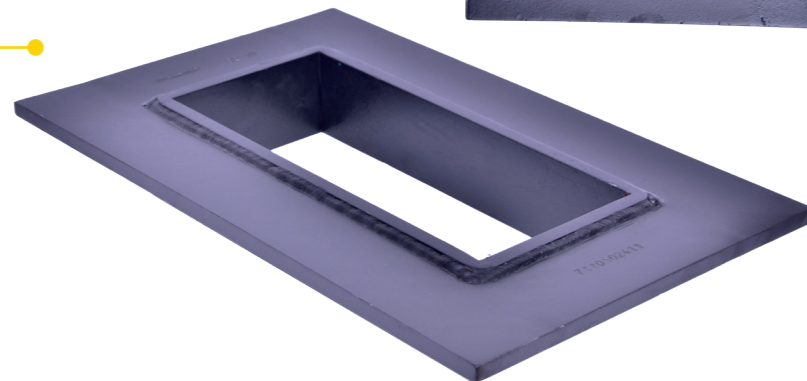
Primed Steel
SS AISI 316 L
Aluminium
Other materials available upon request



| POS | (mm) | (inches) |
|-----|-------|----------|
| H1 | H-120 | H-4.252 |
| W1 | W-120 | W-4.724 |
| D | 60 | 2.362 |
| f | 60 | 2.362 |
| t1 | 10 | 0.394 |
| t2 | 5 | 0.197 |
| t3 | 10 | 0.394 |



WallMax® Rectangular Flanged Frame (WRFF)



To be used in combination with

| Code | Article | Openings | Packing space (mm) | External nominal dimensions (HxW D=60mm) | | Weight | |
|-------------|---------------------|----------|--------------------|--|---------------|--------|--------|
| | | | | mm | in | kg | lb |
| 711010 0611 | WRFF 60 1x1 Primed | 1x1 | 60x120 | 238x260 | 9.370x10.236 | 5.77 | 12.712 |
| 711010 0612 | WRFF 60 1x2 Primed | 1x2 | 60x120 | 238x390 | 9.370x15.354 | 8.85 | 19.450 |
| 711010 0613 | WRFF 60 1x3 Primed | 1x3 | 60x120 | 238x520 | 9.370x20.472 | 11.93 | 26.290 |
| 711010 0614 | WRFF 60 1x4 Primed | 1x4 | 60x120 | 238x650 | 9.370x25.591 | 15.00 | 33.079 |
| 711010 0615 | WRFF 60 1x5 Primed | 1x5 | 60x120 | 238x780 | 9.370x30.709 | 18.08 | 39.868 |
| 711010 0616 | WRFF 60 1x6 Primed | 1x6 | 60x120 | 238x910 | 9.370x35.827 | 21.16 | 46.658 |
| 711010 1211 | WRFF 120 1x1 Primed | 1x1 | 120x120 | 298x260 | 11.732x10.236 | 6.89 | 15.188 |
| 711010 1212 | WRFF 120 1x2 Primed | 1x2 | 120x120 | 298x390 | 11.732x15.354 | 10.25 | 22.595 |
| 711010 1213 | WRFF 120 1x3 Primed | 1x3 | 120x120 | 298x520 | 11.732x20.472 | 13.61 | 30.003 |
| 711010 1214 | WRFF 120 1x4 Primed | 1x4 | 120x120 | 298x650 | 11.732x25.591 | 16.97 | 37.410 |
| 711010 1215 | WRFF 120 1x5 Primed | 1x5 | 120x120 | 298x780 | 11.732x30.709 | 20.33 | 44.818 |
| 711010 1216 | WRFF 120 1x6 Primed | 1x6 | 120x120 | 298x910 | 11.732x35.827 | 23.69 | 52.225 |

Note: weights are approx.

WallMax® Group

WRFF Series

| Code | Article | Openings | Packing space (mm) | External nominal dimensions (HxW D=60mm) | | Weight | |
|-------------|----------------------|----------|--------------------|--|---------------|--------|---------|
| | | | | mm | in | kg | lb |
| 711010 1221 | WRFF 120 2x1 Primed | 2x1 | 120x120 | 466x260 | 18.347x10.236 | 10.60 | 23.360 |
| 711010 1231 | WRFF 120 3x1 Primed | 3x1 | 120x120 | 630x260 | 24.803x10.236 | 14.96 | 32.975 |
| 711010 1811 | WRFF 180 1x1 Primed | 1x1 | 180x120 | 358x260 | 14.095x10.236 | 8.01 | 17.663 |
| 711010 1812 | WRFF 180 1x2 Primed | 1x2 | 180x120 | 358x390 | 14.095x15.354 | 11.65 | 25.693 |
| 711010 1813 | WRFF 180 1x3 Primed | 1x3 | 180x120 | 358x520 | 14.095x20.472 | 15.29 | 33.717 |
| 711010 1814 | WRFF 180 1x4 Primed | 1x4 | 180x120 | 358x650 | 14.095x25.591 | 18.94 | 41.745 |
| 711010 1815 | WRFF 180 1x5 Primed | 1x5 | 180x120 | 358x780 | 14.095x30.709 | 22.58 | 49.772 |
| 711010 1816 | WRFF 180 1x6 Primed | 1x6 | 180x120 | 358x910 | 14.095x35.827 | 26.22 | 57.799 |
| 711010 1821 | WRFF 180 2x1 Primed | 2x1 | 180x120 | 586x260 | 23.071x10.236 | 12.84 | 28.312 |
| 711010 1822 | WRFF 180 2x2 Primed | 2x2 | 180x120 | 596x390 | 23.465x15.354 | 19.56 | 43.127 |
| 711010 1823 | WRFF 180 2x3 Primed | 2x3 | 180x120 | 596x520 | 23.465x20.472 | 25.53 | 56.293 |
| 711010 1824 | WRFF 180 2x4 Primed | 2x4 | 180x120 | 596x650 | 23.465x25.591 | 31.88 | 70.283 |
| 711010 1825 | WRFF 180 2x5 Primed | 2x5 | 180x120 | 596x780 | 23.465x30.709 | 38.23 | 84.274 |
| 711010 1826 | WRFF 180 2x6 Primed | 2x6 | 180x120 | 596x910 | 23.465x35.827 | 44.57 | 98.264 |
| 711010 1827 | WRFF 180 2x7 Primed | 2x7 | 180x120 | 596x1040 | 23.465x40.945 | 50.92 | 112.255 |
| 711010 1828 | WRFF 180 2x8 Primed | 2x8 | 180x120 | 596x1170 | 23.465x46.063 | 57.26 | 126.246 |
| 711010 1829 | WRFF 180 2x9 Primed | 2x9 | 180x120 | 596x1300 | 23.465x51.181 | 63.61 | 140.236 |
| 711010 1820 | WRFF 180 2x10 Primed | 2x10 | 180x120 | 596x1430 | 23.465x56.299 | 69.96 | 154.227 |
| 711010 1831 | WRFF 180 3x1 Primed | 3x1 | 180x120 | 814x260 | 32.047x10.236 | 16.48 | 36.332 |
| 711010 2411 | WRFF 240 1X1 Primed | 1x1 | 240x120 | 418x260 | 16.457x15.354 | 9.14 | 20.139 |
| 711010 2412 | WRFF 240 1X2 Primed | 1x2 | 240x120 | 418x390 | 16.457x20.472 | 13.06 | 28.786 |
| 711010 2413 | WRFF 240 1X3 Primed | 1x3 | 240x120 | 418x520 | 16.457x25.591 | 16.98 | 37.432 |

Note: weights are approx.

| Code | Article | Openings | Packing space (mm) | External nominal dimensions (HxW D=60mm) | | Weight | |
|-------------|-----------------------|----------|--------------------|--|---------------|--------|---------|
| | | | | mm | in | kg | lb |
| 711010 2414 | WRFF 240 1X4 Primed | 1x4 | 240x120 | 418x650 | 16.457x30.709 | 20.90 | 46.079 |
| 711010 2415 | WRFF 240 1X5 Primed | 1x5 | 240x120 | 418x780 | 16.457x35.827 | 24.82 | 54.725 |
| 711010 2416 | WRFF 240 1X6 Primed | 1x6 | 240x120 | 418x910 | 16.457x35.827 | 28.75 | 63.732 |
| 711010 2421 | WRFF 240 2X1 Primed | 2x1 | 240x120 | 706x260 | 27.795x10.236 | 15.09 | 33.263 |
| 711010 2422 | WRFF 240 2X2 Primed | 2x2 | 240x120 | 716x390 | 28.189x20.472 | 22.37 | 49.317 |
| 711010 2423 | WRFF 240 2X3 Primed | 2x3 | 240x120 | 716x520 | 28.189x25.591 | 28.90 | 63.722 |
| 711010 2424 | WRFF 240 2X4 Primed | 2x4 | 240x120 | 716x650 | 28.189x30.709 | 35.81 | 78.952 |
| 711010 2425 | WRFF 240 2X5 Primed | 2x5 | 240x120 | 716x780 | 28.189x30.709 | 42.72 | 94.181 |
| 711010 2426 | WRFF 240 2X6 Primed | 2x6 | 240x120 | 716x910 | 28.189x35.827 | 49.63 | 109.411 |
| 711010 2427 | WRFF 240 2X7 Primed | 2x7 | 240x120 | 716x1040 | 28.189x40.945 | 56.54 | 124.651 |
| 711010 2428 | WRFF 240 2X8 Primed | 2x8 | 240x120 | 716x1170 | 28.189x46.063 | 63.44 | 139.870 |
| 711010 2429 | WRFF 240 2X9 Primed | 2x9 | 240x120 | 716x1300 | 28.189x51.181 | 70.35 | 155.100 |
| 711010 2420 | WRFF 240 2X10 Primed | 2x10 | 240x120 | 716x1430 | 28.189x56.299 | 77.26 | 170.329 |
| 711010 2431 | WRFF 240 3X1 Primed | 3x1 | 240x120 | 994x260 | 39.134x10.236 | 21.70 | 47.831 |
| 711011 0611 | WRFF 60 1x1 AISI 316 | 1x1 | 60x120 | 238x260 | 9.370x10.236 | 5.91 | 13.038 |
| 711011 1211 | WRFF 120 1x1 AISI 316 | 1x1 | 120x120 | 298x260 | 11.732x10.236 | 7.07 | 15.578 |
| 711011 1212 | WRFF 120 1x2 AISI 316 | 1x2 | 120x120 | 298x390 | 11.732x20.472 | 10.51 | 23.175 |
| 711011 1213 | WRFF 120 1x3 AISI 316 | 1x3 | 120x120 | 298x520 | 11.732x25.591 | 13.96 | 30.772 |
| 711011 1214 | WRFF 120 1x4 AISI 316 | 1x4 | 120x120 | 298x650 | 11.732x30.709 | 17.40 | 38.369 |
| 711011 1811 | WRFF 180 1x1 AISI 316 | 1x1 | 180x120 | 358x260 | 14.095x10.236 | 8.22 | 18.118 |
| 711011 1812 | WRFF 180 1x2 AISI 316 | 1x2 | 180x120 | 358x390 | 14.095x20.472 | 11.95 | 26.350 |
| 711011 1813 | WRFF 180 1x3 AISI 316 | 1x3 | 180x120 | 358x520 | 14.095x25.591 | 15.69 | 34.582 |
| 711011 1814 | WRFF 180 1x4 AISI 316 | 1x4 | 180x120 | 358x650 | 14.095x30.709 | 19.42 | 42.814 |
| 711011 2411 | WRFF 240 1X1 AISI 316 | 1x1 | 240x120 | 418x260 | 16.457x10.236 | 9.37 | 20.657 |
| 711011 2412 | WRFF 240 1X2 AISI 316 | 1x2 | 240x120 | 418x390 | 16.457x20.472 | 13.39 | 29.524 |

Note: weights are approx.

| Code | Article | Openings | Packing space (mm) | External nominal dimensions (HxW D=60mm) | | Weight | |
|------------|-----------------------|----------|--------------------|--|---------------|--------|--------|
| | | | | mm | in | kg | lb |
| 7110112413 | WRFF 240 1X3 AISI 316 | 1x3 | 240x120 | 418x520 | 16.457x25.591 | 17.41 | 38.391 |
| 7110112414 | WRFF 240 1X4 AISI 316 | 1x4 | 240x120 | 418x650 | 16.457x30.709 | 21.44 | 47.258 |
| 7110120621 | WRFF 60 2X1 AL | 2x1 | 60x120 | 346x260 | 13.662x10.236 | 2.89 | 6.371 |
| 7110121211 | WRFF 120 1X1 AL | 1x1 | 120x120 | 300x260 | 11.811x10.236 | 2.39 | 5.258 |
| 7110121212 | WRFF 120 1X2 AL | 1x2 | 120x120 | 300x390 | 11.811x15.354 | 3.55 | 7.822 |
| 7110121213 | WRFF 120 1X3 AL | 1x3 | 120x120 | 300x520 | 11.811x20.472 | 4.71 | 11.386 |
| 7110121214 | WRFF 120 1X4 AL | 1x4 | 120x120 | 300x650 | 11.811x25.590 | 5.87 | 12.950 |
| 7110121811 | WRFF 180 1X1 AL | 1x1 | 180x120 | 358x260 | 14.095x10.236 | 2.77 | 6.113 |
| 7110121812 | WRFF 180 1X2 AL | 1x2 | 180x120 | 358x390 | 14.095x15.354 | 4.03 | 8.893 |
| 7110121813 | WRFF 180 1X3 AL | 1x3 | 180x120 | 358x520 | 14.095x20.472 | 5.29 | 11.671 |
| 7110121814 | WRFF 180 1X4 AL | 1x4 | 180x120 | 358x650 | 14.095x25.590 | 6.56 | 14.450 |
| 7110122411 | WRFF 240 1X1 AL | 1x1 | 240x120 | 418x260 | 16.457x10.236 | 3.16 | 6.971 |
| 7110122412 | WRFF 240 1X2 AL | 1x2 | 240x120 | 418x390 | 16.457x15.354 | 4.52 | 9.965 |
| 7110122413 | WRFF 240 1X3 AL | 1x3 | 240x120 | 418x520 | 16.457x20.472 | 5.88 | 12.957 |
| 7110122414 | WRFF 240 1X4 AL | 1x4 | 240x120 | 418x650 | 16.457x25.590 | 7.24 | 15.950 |

Note: weights are approx.

WallMax's colour-coded module system is rooted in cognitive science. The use of coloured rings draws on a concept known as subitizing: the human ability to instantly recognise small quantities without counting. By applying this principle, WallMax enables installers to quickly identify cable diameters at a glance.