

WallMax® Group

WRFF Series

WallMax® Rectangular Flanged Frame Light

WallMax® Rectangular Flanged Frames Light are structures with a 6mm thick flange and one or more openings.

A large variety of pre-designed, single and multiple opening combinations is offered, and additional customised solutions in terms of packing space and materials can be developed to accommodate specific customer's needs.



WRFFL are designed for installation through casting in the wall or welding.

Sealing solutions using WRFFL frames are used with a combination of WMR series modules and accessories selected according to customer-specific needs.

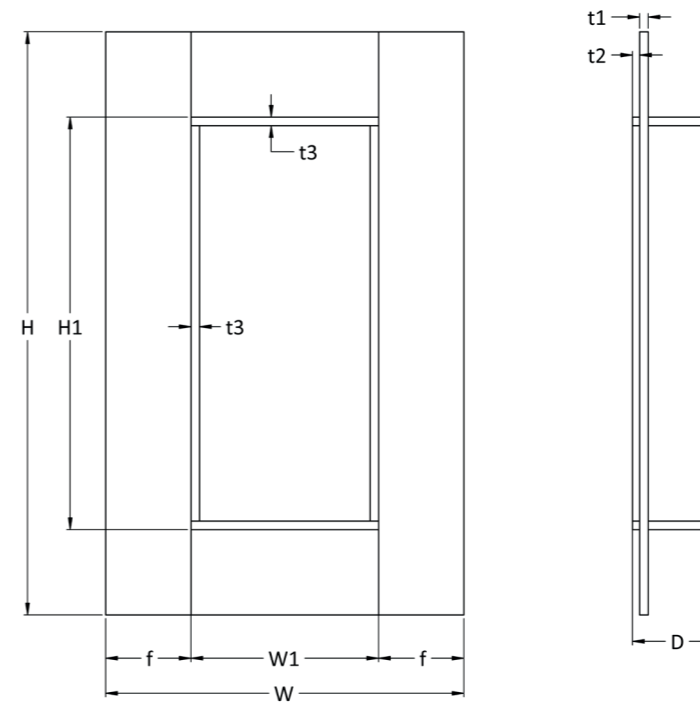
Key benefits:

- » 6mm flange lightweight frame
- » Single or multi-opening options
- » Designed for casting or welded installation
- » Compatible with WMR modules and accessories

Materials:

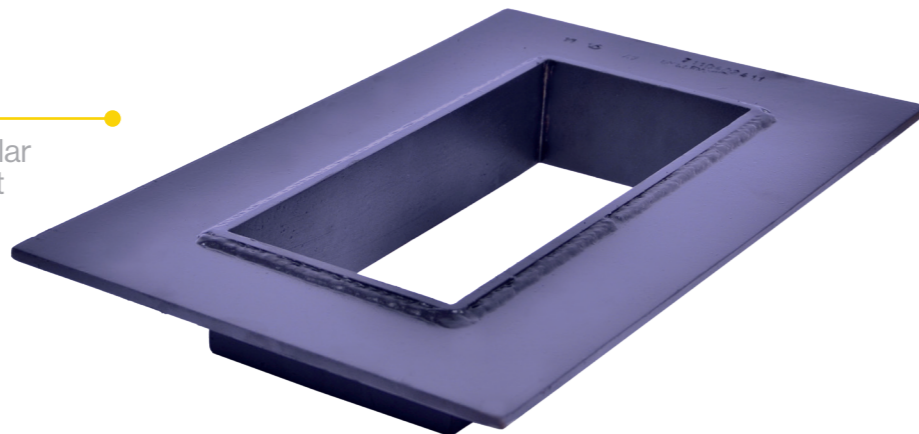
Primed Steel
SS AISI 316 L
Galvanised Steel

Other materials available upon request



POS	(mm)	(inches)
H1	H-120	H-4.252
W1	W-120	W-4.724
D	60	2.362
f	60	2.362
t1	6	0.236
t2	5	0.197
t3	6	0.236

WallMax® Rectangular Flanged Frame Light (WRFFL)



To be used in combination with

Code	Article	Openings	Packing space (mm)	External nominal dimensions (HxW D=60mm)		Weight	
				mm	in	kg	lb
711040 0611	WRFFL 60 - 1x1 Primed	1x1	60x120	230x252	9.055x9.921	3.33	7.330
711040 0612	WRFFL 60 - 1x2 Primed	1x2	60x120	230x382	9.055x15.039	5.23	11.521
711040 0613	WRFFL 60 - 1x3 Primed	1x3	60x120	230x512	9.055x20.158	7.21	15.887
711040 0614	WRFFL 60 - 1x4 Primed	1x4	60x120	230x642	9.055x25.276	9.15	20.165
711040 1211	WRFFL 120 - 1x1 Primed	1x1	120x120	290x252	11.417x9.921	4.00	8.816
711040 1212	WRFFL 120 - 1x2 Primed	1x2	120x120	290x382	11.417x15.039	6.22	13.715
711040 1213	WRFFL 120 - 1x3 Primed	1x3	120x120	290x512	11.417x20.178	8.44	18.614
711040 1214	WRFFL 120 - 1x4 Primed	1x4	120x120	290x642	11.417x25.276	10.67	23.512
711040 1215	WRFFL 120 - 1x5 Primed	1x5	120x120	290x772	11.417x30.394	12.89	28.411
711040 1216	WRFFL 120 - 1x6 Primed	1x6	120x120	290x902	11.417x35.512	15.11	33.310
711040 1221	WRFFL 120 - 2x1 Primed	2x1	120x120	458x252	18.032x9.921	6.45	14.213
711040 1222	WRFFL 120 - 2x2 Primed	2x2	120x120	460x382	18.110x15.039	10.29	22.675

Note: weights are approx.

WallMax® Group

WRFFF Series

Code	Article	Openings	Packing space (mm)	External nominal dimensions (HxW D=60mm)		Weight	
				mm	in	kg	lb
711040 1223	WRFFL 120 - 2x3 Primed	2x3	120x120	460x512	18.110x20.158	13.99	30.838
711040 1224	WRFFL 120 - 2x4 Primed	2x4	120x120	460x642	18.110x25.276	17.76	39.152
711040 1225	WRFFL 120 - 2x5 Primed	2x5	120x120	460x772	18.110x30.394	21.53	47.463
711040 1226	WRFFL 120 - 2x6 Primed	2x6	120x120	460x902	18.110x35.512	25.30	55.777
711040 1227	WRFFL 120 - 2x7 Primed	2x7	120x120	460x1032	18.110x40.630	29.07	64.088
711040 1228	WRFFL 120 - 2x8 Primed	2x8	120x120	460x1162	18.110x45.748	32.84	72.402
711040 1229	WRFFL 120 - 2x9 Primed	2x9	120x120	460x1292	18.110x50.866	36.61	80.713
711040 1220	WRFFL 120 - 2x10 Primed	2x10	120x120	460x1422	18.110x55.984	40.38	89.027
711040 1231	WRFFL 120 - 3x1 Primed	3x1	120x120	626x252	24.646x9.921	8.90	19.612
711040 1811	WRFFL 180 - 1x1 Primed	1x1	180x120	350x252	13.780x9.921	4.67	10.302
711040 1812	WRFFL 180 - 1x2 Primed	1x2	180x120	350x382	13.780x15.039	7.18	15.818
711040 1813	WRFFL 180 - 1x3 Primed	1x3	180x120	350x512	13.780x20.158	9.68	21.336
711040 1814	WRFFL 180 - 1x4 Primed	1x4	180x120	350x642	13.780x25.276	12.18	26.857
711040 1815	WRFFL 180 - 1x5 Primed	1x5	180x120	350x772	13.780x30.394	14.68	32.370
711040 1816	WRFFL 180 - 1x6 Primed	1x6	180x120	350x902	13.780x35.512	17.19	37.888
711040 1821	WRFFL 180 - 2x1 Primed	2x1	180x120	578x252	22.756x9.921	7.80	17.185
711040 1822	WRFFL 180 - 2x2 Primed	2x2	180x120	580x382	22.835x15.039	12.19	26.883
711040 1823	WRFFL 180 - 2x3 Primed	2x3	180x120	580x512	22.835x20.158	16.46	36.286
711040 1824	WRFFL 180 - 2x4 Primed	2x4	180x120	580x642	22.835x25.276	20.79	45.836
711040 1825	WRFFL 180 - 2x5 Primed	2x5	180x120	580x772	22.835x30.394	25.12	55.387
711040 1826	WRFFL 180 - 2x6 Primed	2x6	180x120	580x902	22.835x35.512	29.46	64.937
711040 1827	WRFFL 180 - 2x7 Primed	2x7	180x120	580x1032	22.835x40.630	33.79	74.488
711040 1828	WRFFL 180 - 2x8 Primed	2x8	180x120	580x1162	22.835x45.748	38.12	84.038

Note: weights are approx.

Code	Article	Openings	Packing space (mm)	External nominal dimensions (HxW D=60mm)		Weight	
				mm	in	kg	lb
711040 1829	WRFFL 180 - 2x9 Primed	2x9	180x120	580x1292	22.835x50.866	42.45	93.588
711040 1820	WRFFL 180 - 2x10 Primed	2x10	180x120	580x1422	22.835x55.984	46.78	103.139
711040 1831	WRFFL 180 - 3x1 Primed	3x1	180x120	806x252	31.732x9.921	10.92	24.070
711040 2411	WRFFL 240 - 1x1 Primed	1x1	240x120	410x252	16.142x9.921	5.35	11.756
711040 2412	WRFFL 240 - 1x2 Primed	1x2	240x120	410x382	16.142x15.039	8.13	17.924
711040 2413	WRFFL 240 - 1x3 Primed	1x3	240x120	410x512	16.142x20.158	10.91	24.061
711040 2414	WRFFL 240 - 1x4 Primed	1x4	240x120	410x642	16.142x25.276	13.70	30.199
711041 0611	WRFFL 60 1x1 AISI 316	1x1	60x120	230x252	9.055x9.921	3.41	7.518
711041 1211	WRFFL 120 1x1 AISI 316	1x1	120x120	290x252	11.417x9.921	4.10	9.039
711041 1212	WRFFL 120 1x2 AISI 316	1x2	120x120	290x382	11.417x15.039	6.38	14.065
711041 1213	WRFFL 120 1x3 AISI 316	1x3	120x120	290x512	11.417x20.178	8.66	19.092
711041 1214	WRFFL 120 1x4 AISI 316	1x4	120x120	290x642	11.417x25.276	10.94	24.119
711041 1811	WRFFL 180 1x1 AISI 316	1x1	180x120	350x252	13.780x9.921	4.79	10.560
711041 1812	WRFFL 180 1x2 AISI 316	1x2	180x120	350x382	13.780x15.039	7.36	16.226
711041 1813	WRFFL 180 1x3 AISI 316	1x3	180x120	350x512	13.780x20.158	9.93	21.892
711041 1814	WRFFL 180 1x4 AISI 316	1x4	180x120	350x642	13.780x25.276	12.50	27.558
711041 2411	WRFFL 240 1x1 AISI 316	1x1	240x120	410x252	16.142x9.921	5.48	12.081
711041 2412	WRFFL 240 1x2 AISI 316	1x2	240x120	410x382	16.142x15.039	8.34	18.367
711041 2413	WRFFL 240 1x3 AISI 316	1x3	240x120	410x512	16.142x20.158	11.19	24.670
711041 2414	WRFFL 240 1x4 AISI 316	1x4	240x120	410x642	16.142x25.276	14.05	30.964
711043 0611	WRFFL 60 1x1 Galv	1x1	60x120	230x252	9.055x9.921	3.33	7.330
711043 1211	WRFFL 120 1x1 Galv	1x1	120x120	290x252	11.417x9.921	4.00	8.816
711043 1212	WRFFL 120 1x2 Galv	1x2	120x120	290x382	11.417x15.039	6.22	13.715
711043 1213	WRFFL 120 1x3 Galv	1x3	120x120	290x512	11.417x20.178	8.44	18.614
711043 1214	WRFFL 120 1x4 Galv	1x4	120x120	290x642	11.417x25.276	10.67	23.512

Note: weights are approx.

WallMax® Group

WRFF Series

Code	Article	Openings	Packing space (mm)	External nominal dimensions (HxW D=60mm)		Weight	
				mm	in	kg	lb
711043 1215	WRFFL 120 1x5 Galv	1x5	120x120	290x772	11.417x30.394	12.89	28.411
711043 1216	WRFFL 120 1x6 Galv	1x6	120x120	290x902	11.417x35.512	15.11	33.310
711043 1221	WRFFL 120 2x1 Galv	2x1	120x120	458x252	18.032x9.921	6.47	14.259
711043 1231	WRFFL 120 3x1 Galv	3x1	120x120	626x252	24.646x9.921	8.90	19.612
711043 1811	WRFFL 180 1x1 Galv	1x1	180x120	350x252	13.780x9.921	4.67	10.302
711043 1812	WRFFL 180 1x2 Galv	1x2	180x120	350x382	13.780x15.039	7.18	15.818
711043 1813	WRFFL 180 1x3 Galv	1x3	180x120	350x512	13.780x20.158	9.68	21.336
711043 1814	WRFFL 180 1x4 Galv	1x4	180x120	350x642	13.780x25.276	12.18	26.857
711043 1815	WRFFL 180 1x5 Galv	1x5	180x120	350x772	13.780x30.394	14.68	32.370
711043 1816	WRFFL 180 1x6 Galv	1x6	180x120	350x902	13.780x35.512	17.19	37.888
711043 1821	WRFFL 180 2x1 Galv	2x1	180x120	578x252	22.756x9.921	7.80	17.185
711043 1831	WRFFL 180 3x1 Galv	3x1	180x120	806x252	31.732x9.921	10.92	24.070
711043 2411	WRFFL 240 1x1 Galv	1x1	240x120	410x252	16.142x9.921	5.35	11.756
711043 2412	WRFFL 240 1x2 Galv	1x2	240x120	410x382	16.142x15.039	8.13	17.924
711043 2413	WRFFL 240 1x3 Galv	1x3	240x120	410x512	16.142x20.158	10.91	24.061
711043 2414	WRFFL 240 1x4 Galv	1x4	240x120	410x642	16.142x25.276	13.70	30.199

Note: weights are approx.

