

WALLMAX®

Frame or Module This Side

WALLMAX®

E: [info@wallmax.it](mailto:info@wallmax.it)

WallMax Retainer Plate This Side

WE 120  
Galv

OPEN

OPEN

WE 120  
Galv

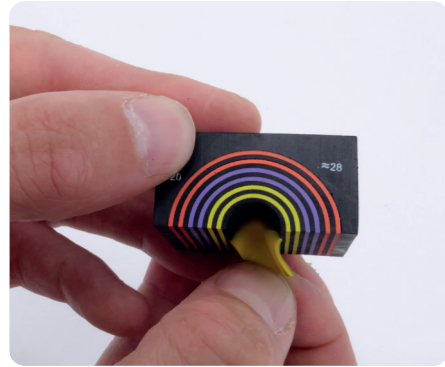
# The smarter standard in mechanical sealing

Sealing  
confidence.

WallMax® by FIlOform

# WallMax® Group Introduction

Seal your cable infrastructure with mechanical precision. WallMax® is an installer-friendly mechanical sealing system with colour-coded rings that make it simple to size up, strip back, and seal your cable or pipe penetrations.



-  **Seals against ingress from water, fire, gas, rodents & dust.**
-  **Capacity for multiple wires for space-saving installations.**
-  **Fully compliant with industry standards.**
-  **Reconfigurable & futureproof.**
-  **Ideal for data centres, power, telecoms, utilities, energy, rail, and more.**
-  **Easily adapts to any wall, pipe or cable scenario.**
-  **No filler or sealant required.**
-  **Backed by expert support and a full design-to-install service.**

## With WallMax® you can:

- » Quickly identify cable diameters using the coloured rings within each module.
- » Get visual assurance and built-in accuracy – no guesswork.
- » Mount, modify, reconfigure and expand with ease as required.
- » 'Peel to seal' by stripping back each coloured layer to fit the desired cable/pipe size.
- » Mix modules of different sizes and diameters to customise your solution.
- » Achieve a perfect seal regardless of the cable, pipe, or environment.



# WallMax® Group

## WMR Series

### WallMax® Multicolor Regular Modules

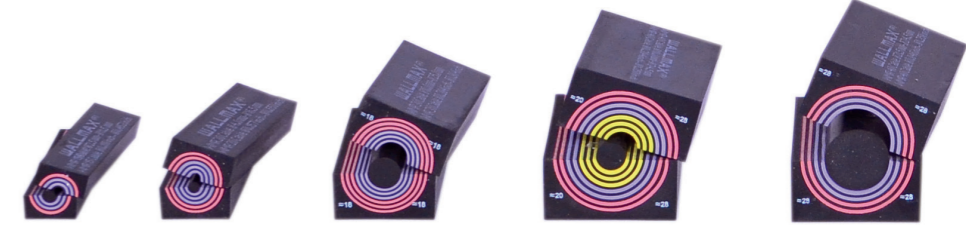
WallMax modules form the core sealing component of the mechanical sealing system. These modules are installed within a WallMax frame and work in conjunction with additional system components to deliver a secure, high-performance seal.

#### Key benefits:

- » Durable EPDM rubber construction with two black cradles.
- » Colour-coded layers (yellow, purple, red) for fast diameter identification and reduced install time.
- » Min/max diameters clearly printed on each side.
- » Solid core modules fill unused frame space and double as spares for future cabling.
- » Standard 60mm depth.
- » Combine single and multi-opening modules to optimise frame packing and space efficiency.



WallMax® Multicolor Regular Modules allows for quick, easy installation. Combining modules with single and multiple openings maximises the utilisation of packing space within a frame.



Code	Article	Accommodates cable/pipe diameter		External dimensions	Weight	
		ø mm	ø in		g	lb
716000 0015	WRM 15	0+2.5 - 11.6	0+0.098 - 0.457	15X15	16	0.035
716000 4015	WMR 15w40	0+2.5 - 11.6	0+0.098 - 0.457	15x40	42	0.093
716000 0020	WMR 20	0+4.0 - 16.5	0+0.157 - 0.650	20x20	28	0.062
716000 4020	WMR 20w40	0+4.0 - 16.5	0+0.157 - 0.650	20x40	54	0.119
71 6000 0030	WRM 30	0+10.0 - 25.0	0+0.394 - 0.984	30x30	63	0.139
71 6000 4030	WRM 30w40	0+10.0 - 25.0	0+0.394 - 0.984	30x40	84	0.185
71 6000 0040	WRM 40	0+21.5 - 34.5	0+0.846 - 1.358	40x40	113	0.256
71 6000 1040	WRM 40 10-34	0+10.0 - 34.5	0+0.394 - 1.358	40x40	112	0.247
71 6000 0060	WRM 60	0+24.0 - 54.0	0+0.945 - 2.126	60x60	254	0.560
71 6001 0060	WRM 60wop	24.0 - 54.0	0.945 - 2.126	60x60	222	0.489
716000 2860	WRM 60 28-54	0+28.0 - 54.0	0+1.102 - 2.126	60x60	254	0.560
71 6001 2860	WRM 60wop 28-54	28.0 - 54.0	1.102 - 2.126	60x60	210	0.463
716000 0080	WRM 80	0+48.0 - 71.0	0+1.890 - 2.795	80x80	452	0.996
716001 0080	WRM 80wop	48.0 - 71.0	1.890 - 2.795	80x80	324	0.714
716000 0090	WRM 90	0+48.0 - 71.0	0+1.890 - 2.795	90x90	572	1.261
716001 0090	WRM 90wop	48.0 - 71.0	1.890 - 2.795	90x90	444	0.979
716000 0120	WRM 120	0+67.5 - 99.0	0+2.657 - 3.898	120x120	1028	2.266
716001 0120	WRM 120wop	67.5 - 99.0	2.657 - 3.898	120x120	770	1.698

Note: weights are approx.

# WallMax® Group

## WR & WRS Series

### WallMax® Round Frames

WallMax round frames are designed for circular wall openings where a sealed cable or pipe entry point is required. Engineered for performance, these frames serve as the structural foundation for the WallMax modular sealing system in round penetrations.

#### Key benefits:

- » Designed for single cable or pipe transit.
- » Pre-assembled two-part frame with single-opening round module for precise sealing.
- » Each model supports specific range of pipe diameters.
- » Compatible with sleeves (sold separately) to further secure pipe passages via bolts on the front flange.
- » Accommodates cables and pipes from 3.6 mm to 170.0 mm diameter.
- » Peel-off inner layers allow quick, accurate adjustment to fit each pipe size.

### WallMax® Round Squared Frames

WallMax Round Squared Frames combine the space efficiency of a round entry with the modular flexibility of a square internal layout. The frame houses the sealing modules and provides a rigid enclosure for installation.

#### Key benefits:

- » Round frame with an inner square packing space for WMR modules.
- » Supports a wide range of module combinations for maximum flexibility.
- » Seals passages via bolt-tightened flange, with no expander or retainer plates required.
- » Compatible with optional external sleeve (sold separately) for additional mounting versatility.



# WallMax® Group WM Series

## WallMax® Mini Top & Mini Back Frames

The WallMax® Mini Top Frame is a compact sealing frame designed for small-scale installations where space is limited, but reliable ingress protection is essential. Its Back Frame counterpart enables horizontal cable routing where top access isn't suitable.

### Key benefits:

- » Lightweight cast aluminium frames for control panels and electrical enclosures.
- » Installable from inside or outside the panel.
- » Integrated expander, with no retainer plates required.
- » Designed for use with compact 30mm depth modules.



Used with WallMax®  
Module Compact  
(WMC)



WallMax®  
Mini Frame Top  
(WM mini)

### Available in 2 versions:

- » Mini Top - compression unit accessed from the top.
- » Mini Back - compression unit accessed from the back.

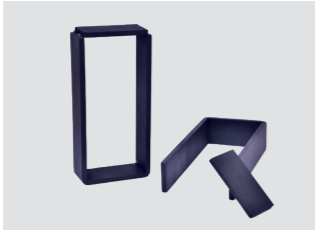
WallMax® Mini Frame  
Back (WM mini)

“WallMax®’s colour-coded visual system eliminates guesswork. Installers can see exactly what they’re doing and be sure each seal is secure. Combined with FILOform’s technical project expertise and turnkey service, WallMax® offers a new level of project assurance.”

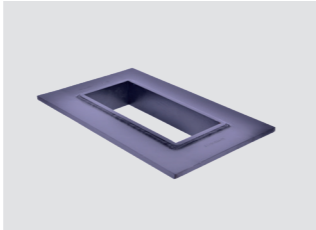
### Frames



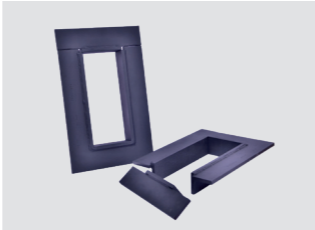
WallMax® Rectangular Metal Frame (WRF)



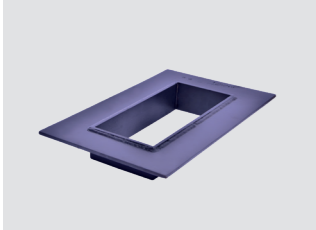
WallMax® Rectangular Metal Frame Openable (WRFO)



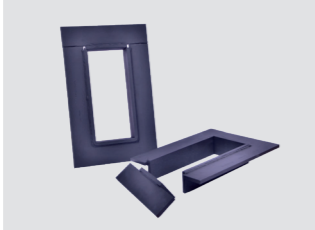
WallMax® Rectangular Flanged Frame (WRFF)



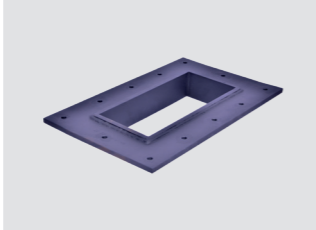
WallMax® Rectangular Flanged Frame Openable (WRFFO)



WallMax® Rectangular Flanged Frame Light (WRFFL)



WallMax® Rectangular Flanged Frame Light Openable (WRFFLO)



WallMax® Rectangular Flanged Holed Frame (WRHFF)



WallMax® Rectangular Flanged Holed Frame Openable (WRHFFO)



WallMax® Rectangular Flanged Holed Frame Light (WRHFFL)



WallMax® Rectangular Flanged Holed Frame Light Openable (WRHFFLO)

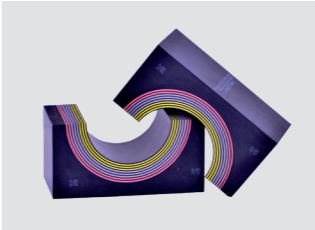


WallMax® Modular Frame (WMF)

### Modules



WallMax® Module Regular (WMR)



WallMax® Module Regular without Plug (WMRwop)



WallMax® Plug (WP)



WallMax® Module Solid (WMS)

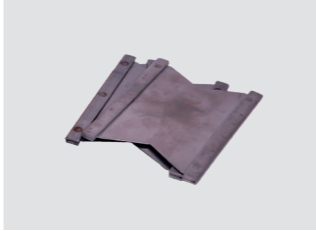


WallMax® Module Compact (WMC)



WallMax® Module Solid Compact (WMSC)

### Accessories & Assembly Parts



WallMax® Retainer Plate (WRP)



WallMax® Lubricants (WMLub)



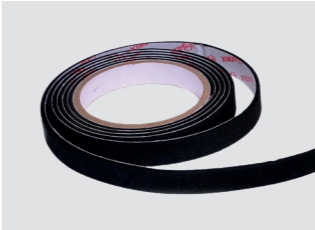
WallMax® Expander (WE)



WallMax® Expander Compact (WEC)



WallMax® Pre-compression Tools (WPCT)



WallMax® Sealing Strip (WSS)

Get in touch to discuss your project  
and how we can seal it.

E [infouk@filoform.com](mailto:infouk@filoform.com)  
T +44(0) 118 334 2200

[www.filoform.co.uk](http://www.filoform.co.uk)

**WALLMAX<sup>®</sup>**